

BREVAN HOWARD MASTER FUND LIMITED ("BHMFL")

BREVAN HOWARD

Risk Report - As at close of business on 30-Jun-2014

T +44 (0)20 7022 6250 www.brevanhoward.com

NAV: \$26,459mm²

Performance summary

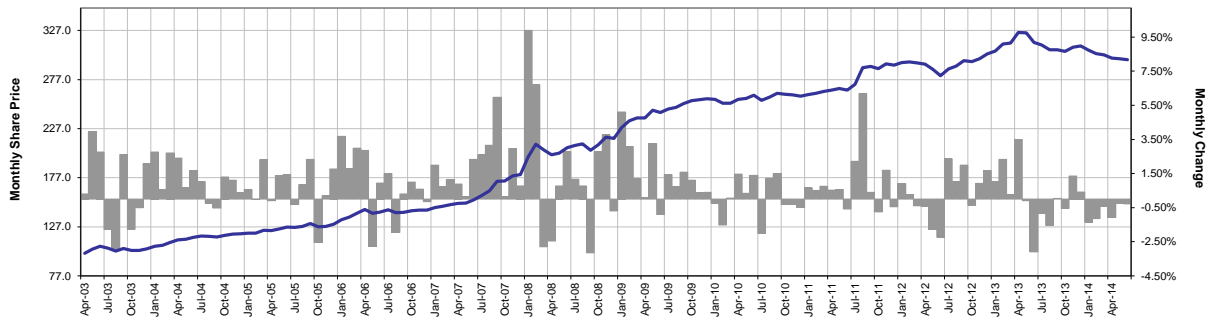
Brevan Howard Fund Limited ("BHFL") USD Class A Shares NAV Per Share % Change ^{1,2}													
Year	Jan	Feb	Mar	Apr	May	Jun	Jul	Aug	Sep	Oct	Nov	Dec	YTD
2003				0.31	3.95	2.75	-1.77	-2.92	2.62	-1.75	-0.51	2.09	4.62
2004	2.76	0.56	2.70	2.41	0.68	1.66	1.01	-0.25	-0.53	1.29	1.11	0.38	14.62
2005	0.56	-0.01	2.31	-0.10	1.37	1.42	-0.31	0.85	2.33	-2.52	0.20	1.77	8.03
2006	3.68	1.79	2.98	2.86	-2.75	0.93	1.50	-1.96	0.30	1.00	0.59	-0.15	11.10
2007	1.99	0.74	1.13	0.89	0.15	2.32	2.60	3.16	5.97	0.15	2.97	0.77	25.21
2008	9.89	6.70	-2.79	-2.46	0.78	2.78	1.16	0.78	-3.16	2.78	3.76	-0.70	20.43
2009	5.11	3.07	1.18	0.09	3.24	-0.90	1.42	0.73	1.57	1.10	0.38	0.39	18.65
2010	-0.25	-1.51	0.05	1.47	0.33	1.39	-2.00	1.22	1.48	-0.32	-0.31	-0.48	1.01
2011	0.66	0.51	0.75	0.52	0.56	-0.57	2.21	6.19	0.40	-0.75	1.68	-0.46	12.15
2012	0.90	0.24	-0.39	-0.43	-1.76	-2.22	2.37	1.03	1.98	-0.36	0.92	1.68	3.93
2013	1.02	2.32	0.25	3.50	-0.09	-3.09	-0.82	-1.54	0.03	-0.54	1.35	0.42	2.68
2014	-1.35	-1.14	-0.43	-1.07	-0.25	-0.29							-4.44

Performance Statistics ^{1,2}	MTD (%)	QTD (%)	YTD (%)	12M (%)	LTD ³ (%)	ARR ⁴ (%)	Risk ⁵ (%)	Sharpe ⁶ (X)
BHFL USD Class A Shares	-0.29	-1.60	-4.44	-5.52	197.45	10.18	5.29	1.58

Data for June 2014 is estimated by Brevan Howard Asset Management LLP. PAST PERFORMANCE IS NOT INDICATIVE OF FUTURE RESULTS.

Performance graph

BHFL NAV Per Share and Monthly Change^{1,2}



PAST PERFORMANCE IS NOT INDICATIVE OF FUTURE RESULTS.

Risk

Securities Leverage [ratio of absolute value of securities (excluding derivatives) to NAV]

As at 30 June 2014 1.3

DV01 Summary (Change in Fund NAV for a 0.01% rise in rates)

ccy	3M	2Y	10Y+	Total
EUR	(0.03%)	(0.03%)	0.00%	(0.07%)
USD	(0.01%)	0.04%	(0.00%)	0.02%
JPY	(0.00%)	0.00%	0.02%	0.02%
GBP	0.00%	(0.00%)	0.00%	0.01%
Other	(0.00%)	(0.00%)	0.00%	(0.00%)
Total	(0.04%)	0.00%	0.02%	(0.02%)

Historical Simulations (%NAV)

Scenario	Period	Performance
Asian Crisis 5-Day	07/10/97 - 14/10/97	(0.7)
Russia Deval 5-Day	26/08/98 - 31/08/98	(0.6)
LTCM	01/08/98 - 30/11/98	(4.0)
Sep 2001	10/09/01 - 28/09/01	(0.6)
Aug-03	30/07/03 - 01/08/03	(1.6)

Net Fx Delta Exposure (% NAV)⁷

Region	Delta
Asia	1%
Europe	(5%)
Other	(3%)
USD	7%

Other Asset Classes - Net Exposure (% of NAV)⁸

Class	Delta
Equity	3%
Commodity	3%
Credit	3%

Total IR Vega Exposure (% NAV)⁹ 0.40%

Total Fx Vega Exposure (% NAV)¹⁰ 0.21%

Notes

- Performance figures are the performance of BHFL USD Class A Shares net of all investment management fees (2% annual management fee and 20% performance fee) and all other fees and expenses payable by BHFL.
- All numbers include estimated month to date performance, calculated by BHAM. Data is subject to revision.
- Since inception (April 2003).
- Annual rate of return since inception of BHFL (April 2003), calculated by BHAM.
- Annualised return standard deviation (daily returns, since inception of BHFL (April 2003)), calculated by BHAM.
- Annualised excess return (over Federal Funds target rate) / annualised standard deviation of excess return (daily returns), since inception of BHFL (April 2003).
- Figures are rounded to the nearest whole number. Therefore in some instances the total may not equal [100% / 0%].
- Equity & commodity - net delta; Credit - net Bond Equivalent Market Value
- Change in BHMFL NAV for a relative rise of 10% in implied normal yield vol.
- Change in BHMFL NAV for an absolute 1% rise in implied vol.
- Source: Underlying data provided by the Administrator, International Fund Services (Ireland) Limited. Information derived using software provided by Murex and RiskMetrics.

Private and confidential. Not for publication

BHM20140630

Important Legal Information and Disclaimer

This material has been produced by Brevan Howard Asset Management LLP ("BHAM") for its internal reporting purposes and is being made available to you for illustrative purposes only on an ad hoc basis. BHAM has used reasonable skill and care in the preparation of this material from sources believed to be reliable but gives no warranties or representations as to the accuracy or completeness of this information. BHAM is not intended to provide a sufficient basis on which to make an investment decision. Past results are not indicative of future results. BHAM may at its discretion decide to provide you with further data or material but makes no representation that such further data or material will be calculated or produced on the same basis, or in the same format, as this material. This material is provided to you on the basis that you are an experienced or existing investor in unregulated collective investment schemes, a Professional Client as defined by the rules of the Financial Conduct Authority. This material is not intended for, nor should be used by, for Retail Clients and the fund to which this material relates is not available to Retail Clients for investment. BHAM is authorised and regulated by the Financial Conduct Authority.

This material does not constitute an invitation or offer to subscribe for or purchase any of the products or services mentioned herein, nor is it intended to constitute, and should not be construed as, investment advice. Potential investors in the fund(s) to which this material relates should seek their own independent financial advice. BHAM neither provides investment advice to, nor receives and transmits orders from, investors in the fund(s) to which this material relates nor does it carry on any other activities with or for such investors that constitute "MiFID or equivalent third country business" for the purposes of the rules of the Financial Conduct Authority.

This report is exempt from the restriction on the promotion of an unregulated collective investment scheme in section 238 of the Financial Services and Markets Act 2000 on the basis that it is made available exclusively to and/or directed exclusively at persons who are Professional Clients or Eligible Counterparties for the purposes of the FCA Handbook. The investments and investment services to which this report relates are only available to the persons referred to above and other persons should not act or rely on it. Moreover, any investment or service to which this material may relate is not intended for Retail Clients and will not be made available to Retail Clients. You should note that, if you choose to invest in any fund, your capital will be at risk and you may therefore lose some or all of any amount that you choose to invest.

In the United States, this document is communicated by Brevan Howard US LLC, a Delaware limited liability company, which acts as non-exclusive placement agent with respect to the sale of interests to certain investors in the Funds, and may provide such investors with marketing and other materials on behalf of Brevan Howard and the Funds. Brevan Howard US LLC is registered as a broker-dealer under the U.S. Securities Exchange Act of 1934, as amended, and under various state securities laws, and is a member of the Financial Industry Regulatory Authority, Inc.

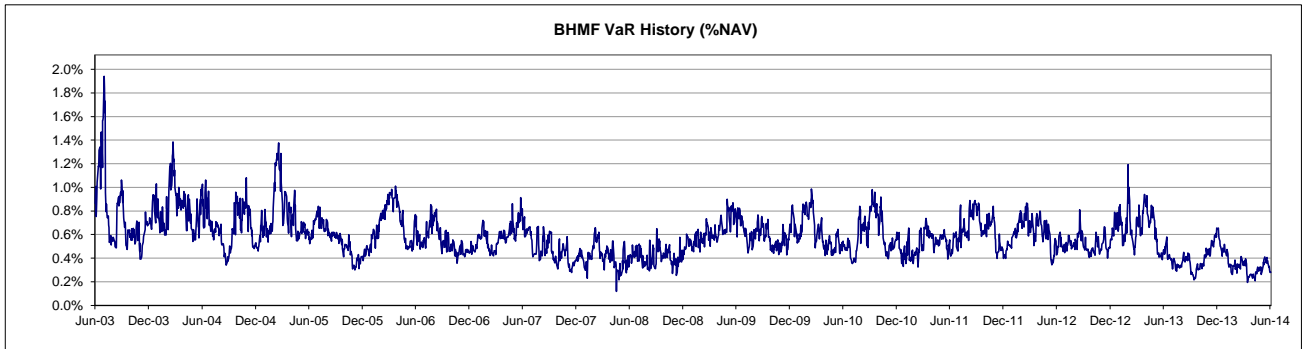
In relation to member states of the European Economic Area ("EEA") that have implemented the EU Directive on Alternative Investment Fund Managers (Directive (2011/61/EU)) ("AIFMD"), interests in the Fund will only be offered or sold to investors in any such member state to the extent that the Fund: (i) is permitted to be marketed into the relevant member state pursuant to Article 42 of the AIFMD (as implemented into applicable local law); or (ii) where any marketing, offer and sale of interests of the Fund occurs exclusively at the initiative of the relevant investor.

Value at Risk (% NAV)¹	0.28
--	------

VaR by Product			
Product	VaR \$mm	%NAV	%Total
IR	62.9	0.24%	42%
Vega	29.6	0.11%	20%
FX	21.9	0.08%	15%
Equity	20.8	0.08%	14%
Com	7.9	0.03%	5%
Credit	7.0	0.03%	5%
Total	74.2	0.28%	100%
Flag		3.00%	
Over / (Under)		(2.72%)	
Flag utilisation		9.34%	

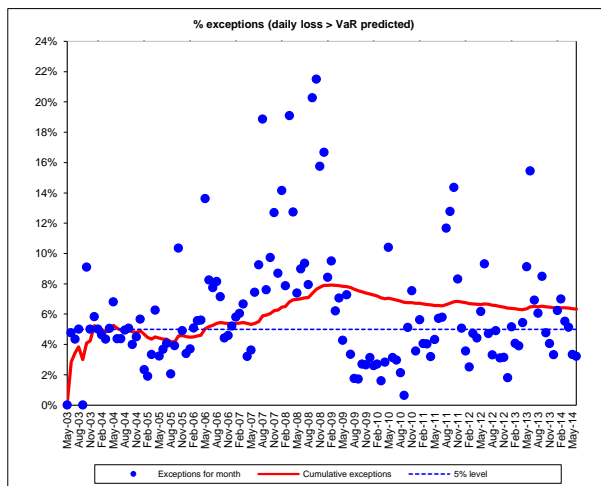
IR VaR by Currency²	
Currency	IR VaR
EUR	0.19%
USD	0.12%
JPY	0.06%
GBP	0.05%

Exposure by Geographic Region^{3,4}	
Region	%
Americas	25%
Europe	40%
Asia	23%
Oceania	4%
Africa	1%
Multi-Region	7%
Total	100%



VaR - Accuracy of VaR Methodology

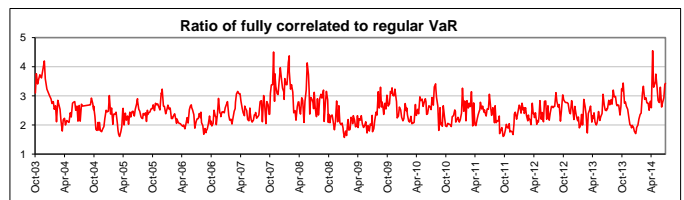
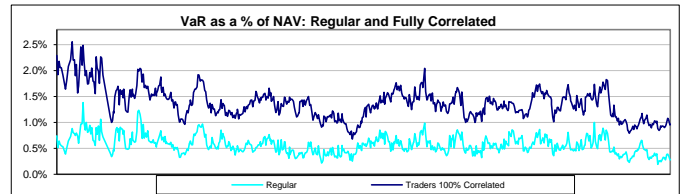
The VaR method is intended to describe the level of loss that would be exceeded no more than 5% of the time. The method uses historical market data from the last 2 years. The graph shows the actual incidence of losses that are greater than the estimated VaR ("VaR Exceptions"). During 2008, exception rate was greater than 5% because actual market moves were much more volatile than the historical data. The selection of different confidence intervals may achieve different results, including a higher incidence of exceptions which exceed the VaR calculation.



VaR - Reliance on beneficial correlation between Traders

The VaR of BHMFL takes account of beneficially low correlations between traders. To account for situations where these correlations change sharply BHMFL calculates the VaR assuming all traders are 100% correlated. This fully correlated VaR has usually been between 1.5 and 3 times the size of the regular VaR.

At 30 Jun 2014	BHMFL VaR (a)	0.3%
	Sum of trader VaR's (b)	1.0%
	Ratio (b/a)	3.44



Notes:

1. Calculated using historical simulation based on a 1 day, 95% confidence interval.
2. IR risks may exist for currencies other than those listed.
3. Geographical Exposure is based on VaR by region.
4. Figures are rounded to the nearest whole number. Therefore in some instances the total may not equal [100% / 0%].
5. Source : Underlying data provided by the Administrator, International Fund Services (Ireland) Limited. Information derived using software provided by Murex and RiskMetrics

Private and confidential. Not for publication

BHM20140630

Important Legal Information and Disclaimer

This material has been produced by Brevan Howard Asset Management LLP ("BHAM") for its internal reporting purposes and is being made available to you for illustrative purposes only on an ad hoc basis. BHAM has used reasonable skill and care in the preparation of this material from sources believed to be reliable but gives no warranties or representations as to the accuracy or completeness of this information. This material is for information purposes and is not intended to provide a sufficient basis on which to make an investment decision. Past results are not indicative of future results. BHAM may at its discretion decide to provide you with further data or material but makes no representation that such further data or material will be calculated or produced on the same basis, or in the same format, as this material. This material is provided to you on the basis that you are an experienced or existing investor in unregulated collective investment schemes, a Professional Client as defined by the rules of the Financial Conduct Authority. This material is not intended for, nor should be used by, Retail Clients and the fund to which this material relates is not available to Retail Clients for investment. BHAM is authorised and regulated by the Financial Conduct Authority.

This material does not constitute an invitation or offer to subscribe for or purchase any of the products or services mentioned herein, nor is it intended to constitute, and should not be construed as, investment advice. Potential investors in the fund(s) to which this material relates should seek their own independent financial advice. BHAM neither provides investment advice to, nor receives and transmits orders from, investors in the fund(s) to which this material relates nor does it carry on any other activities with or for such investors that constitute "MiFID or equivalent third country business" for the purposes of the rules of the Financial Conduct Authority.

This report is exempt from the restriction on the promotion of an unregulated collective investment scheme in section 238 of the Financial Services and Markets Act 2000 on the basis that it is made available exclusively to and/or directed exclusively at persons who are Professional Clients or Eligible Counterparties for the purposes of the FCA Handbook. The investments and investment services to which this report relates are only available to the persons referred to above and other persons should not act or rely on it. Moreover, any investment or service to which this material may relate is not intended for Retail Clients and will not be made available to Retail Clients. You should note that, if you choose to invest in any fund, your capital will be at risk and you may therefore lose some or all of any amount that you choose to invest.

In the United States, this document is communicated by Brevan Howard US LLC, a Delaware limited liability company, which acts as non-exclusive placement agent with respect to the sale of interests in the Funds, and may provide such investors with marketing and other materials on behalf of Brevan Howard and the Funds. Brevan Howard US LLC is registered as a broker-dealer under the U.S. Securities Exchange Act of 1934, as amended, and under various state securities laws, and is a member of the Financial Industry Regulatory Authority, Inc.

In relation to member states of the European Economic Area ("EEA") that have implemented the EU Directive on Alternative Investment Fund Managers (Directive (2011/61/EU)) ("AIFMD"), interests in the Fund will only be offered or sold to investors in any such member state to the extent that the Fund: (i) is permitted to be marketed into the relevant member state pursuant to Article 42 of the AIFMD (as implemented into applicable local law); or (ii) where any marketing, offer and sale of interests in the Fund occurs exclusively at the initiative of the relevant investor.